



Give Your Users Network Access to Your CD and DVD Based Content



Easily create images of your CDs and DVDs and put them on a network accessible PrimeArray CD/DVD Server. Great For...

- **Electronic Manuals (i.e. Repair, Maintenance)**
- **Training Materials and Courses**
- **Audio and Video Files**
- **Digital Photos and Graphics**
- **Archived Documents**
- **AutoCAD Drawings**
- **Medical Records**
- **Legal and Tax Records**
- **Subscription Based Information**
- **Marketing Materials and Presentations**
- **FEDLOG**
- **Backup of Your CD/DVD Collection**

Let your users access the same CD or DVD – simultaneously!



Pikes Peak Library District – Success Story

Easily Share CD/DVD Based Information

The Pike's Peak library district is firmly planted in the digital age. Thanks to Pike's Peak's PrimeArray ServStation patrons have reliable, streamlined access to CD- and DVD-based information when and where they need it.

"Our biggest concern is to make the patrons have a better experience and get what they're looking for easily," says Carolyn Coulter, IT Officer for the district.

Simplified CD/DVD License Management

Coulter says, "A lot of the CDs include two or three licenses, which means that you can only have that number of people accessing them at the same time. The system monitors that. We don't violate any of our licensing agreements and it's much easier to manage."

Optional Network Attached Storage (NAS)

The library's PrimeArray system includes an optional network attached storage capability, which helps them store and share their rich local history, including video and audio interviews with people from the area.

"It's a more sophisticated approach to providing this information", says Coulter.

Positive ROI

By not having to focus on handing out and collecting physical discs the library staff can focus on other, more core aspects of their jobs.

Coulter says "...it's a very good return on investment. And I think it has simplified our lives quite a bit, as it has for the patrons and the staff who deal with the patrons. It's just easier. It's a more sophisticated approach to providing this information."

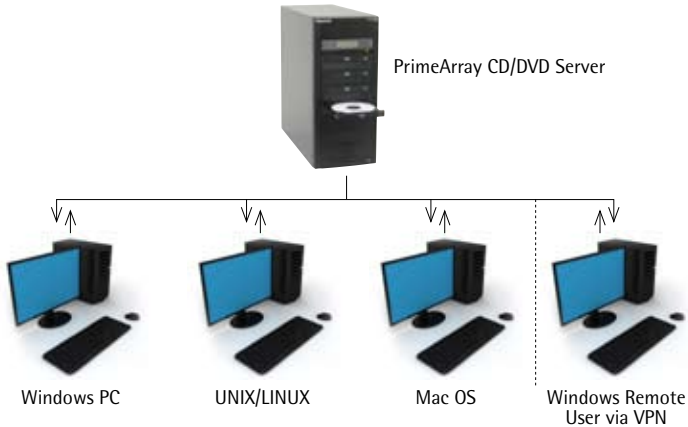
Visit www.primearray.com for the complete case study on the Pikes Peak Library District.

Save Time, Money and Lots of Headaches

- Store and share thousands of CDs and DVDs discs.
- No more worries about replacing scratched, unusable or lost discs.
- No more unhappy users having to wait their turn.
- No more replacing worn-out disc drives.
- No more wasted time keeping track of CDs and DVDs.
- Configure your system with up to 12 DVD drives for direct network access – great for sharing copy protected or encrypted CDs and DVDs that cannot be duplicated.

What is a CD/DVD Server?

A CD/DVD server is a specially designed device to share information stored on CD-ROMs or DVD-ROMs with others in your organization or those who have access to your network. These devices connect directly to your ethernet network, saving the cost of a separate server and network software license.



CD or DVD Discs are placed into the server's optical drive(s) and an exact disc image is automatically copied onto the server's hard drive. The original CD or DVD can be put away in a safe place as users will now have access to the disc image. *See pages 4 and 5 for information about the PrimeArray ServStation and ProServer.*

Why should I buy a PrimeArray CD/DVD Server or Loader?

Everyone's situation is slightly different, but in general you can expect to reap the following benefits:

- Eliminate the time and frustration spent searching for borrowed CD/DVDs.
- Eliminate the cost of replacing damaged or lost CD/DVDs.
- By their nature, PrimeArray servers back-up your CD/DVD library.
- Multiple users can access multiple CD/DVDs simultaneously - no waiting.
- Fast, simultaneous loading of up to 12 CDs or DVDs.
- Simplified CD and DVD license management.
- It is easy and cost effective - positive ROI.

PrimeArray CD/DVD Servers

Starting at \$1,595 or lease for \$40/month

By imaging your CDs and DVDs to the CD/DVD Server's hard drive, you can share many more titles, support more users, enable multiple discs to be accessed simultaneously and provide faster access.

The *ServStation* is PrimeArray's entry-level, network-attached CD/DVD server. This is the system organizations turn to for fast, simplified access to CD and DVD-based information across the network.

The *ProServer* can be configured with up to 8 DVD drives. This is a great solution for:

- Fast, simultaneous disc loading to the internal hard drive, a server or staging area.
- Accessing some types of copy protected or encrypted discs that cannot be copied to a hard drive.
- Accessing a small number of discs that do not change frequently.



Configure Your Own System – Store up to 1,500 disc images

Storage

Hard Drives:	Up to 2 hard drives – 2 TB total capacity
Hard Drive Sizes:	80, 160, 250, 320, 400, 500, 750 or 1,000 GB
Optical Drives:	Up to 8 (2 DVD-R/RW maximum)

Data Protection

RAID Level 0, 1 and JBOD

Network Operating Systems

Windows, Unix, Linux and Mac

Configuration

Tower or Rack

Need more technical or pricing information?
Call PrimeArray at 1-800-433-5133, email
us at sales@primearray.com or visit
www.primearray.com



PrimeArray CD/DVD Servers Plus NAS

Starting at \$2,295 or lease for \$58/month

The *NetServ* is a one system solution for handling all your general network attached storage (NAS) and CD/DVD storage.

CD/DVD Sharing

Put your CDs and DVDs on your network so those who need access can get it when they need it, where they need it. *Includes all the functionality of the PrimeArray ServStation – see page 4.*

Network-Attached Data Storage

Gain more network data storage space and back up servers and workstations regularly.

Use the NetServ for data archiving, additional user space, as a staging point for tape backup or for diskless backup.

Up to eleven volumes can be logically connected and managed as one, making the NetServ scalable to 44 TB of storage capacity.



Configure Your Own System – Store up to 4,000 disc images

Storage

Hard Drives:	Up to 8 hard drives - 8 TB total capacity
Hard Drive Sizes:	80, 160, 250, 320, 400, 500, 750 or 1,000 GB
Optical Drives:	1 or 2 DVD ROM or DVD-R/RW

Data Protection

RAID Level 0, 1, 5 and JBOD

Network Operating Systems

Windows, Unix, Linux and Mac

Configuration

Tower or Rack

Need more technical or pricing information?
Call PrimeArray at 1-800-433-5133, email us at sales@primearray.com or visit www.primearray.com



Three Simple Steps to Setup Your PrimeArray CD/DVD Server

1. Connect the PrimeArray CD/DVD Server to your network. Insert your CDs and DVDs into the server's disc drive(s). The disc image will be automatically copied to the server's internal hard drive. You can now store the physical disc in a safe place.



From a web browser, type in the ip address of the CD/DVD Server to view your disc images.

2. Click on the 'Disc Images' tab to view the detail of all your stored discs.

Disc Name	Disc Format	Location	Size	Status	Backup
101016_2002	120-6000	\\\\PrimeArray_storage	24.00	Ready	Ready
101016_2004	120-6000	\\\\PrimeArray_storage	48.00	Ready	Ready
101016_2002	120-6000	\\\\PrimeArray_storage	207.00	Ready	Ready
101016_2004	120-6000	\\\\PrimeArray_storage	401.00	Ready	Ready
101016_2002	120-6000	\\\\PrimeArray_storage	1747.00	Ready	Ready
101016_2004	120-6000	\\\\PrimeArray_storage	3394.00	Ready	Ready
101016_2002	120-6000	\\\\PrimeArray_storage	1888.00	Ready	Ready
101016_2004	120-6000	\\\\PrimeArray_storage	40.00	Ready	Ready
101016_2002	120-6000	\\\\PrimeArray_storage	428.00	Ready	Ready
101016_2004	120-6000	\\\\PrimeArray_storage	184.00	Ready	Ready

3. Click on the 'Disc Shares' tab to set your sharing options. You can choose to share a single disc image or group several discs under a shareable folder. Assign user permissions if desired.

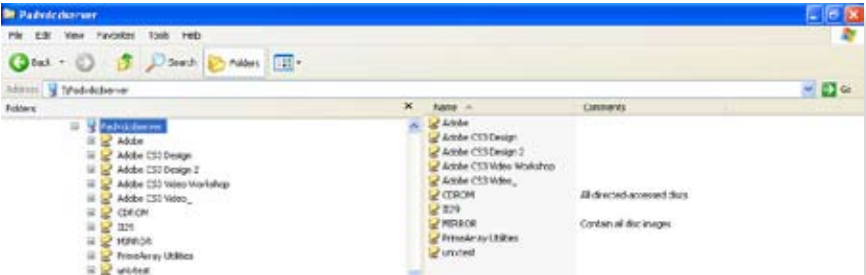
Share Name	Share Type	Share Target	Permissions
\\\\share	Folder Share	\\\\PrimeArray	Full Control
\\\\share	Folder Share	\\\\PrimeArray	Full Control
\\\\share	Folder Share	\\\\PrimeArray	Full Control
\\\\share 101-2002	Disc Share	\\\\share 101-2002	Full Control
\\\\share 101-2004	Disc Share	\\\\share 101-2004	Full Control
\\\\share 101-2002	Disc Share	\\\\share 101-2002	Full Control
\\\\share 101-2004	Disc Share	\\\\share 101-2004	Full Control
\\\\share 101-2002	Disc Share	\\\\share 101-2002	Full Control
\\\\share 101-2004	Disc Share	\\\\share 101-2004	Full Control
\\\\share 101-2002	Disc Share	\\\\share 101-2002	Full Control
\\\\share 101-2004	Disc Share	\\\\share 101-2004	Full Control

Easy User Access to Your Shared CD/DVDs

Use **Windows Explorer** or the built in **Content Management System** to access the disc images.

Windows Explorer

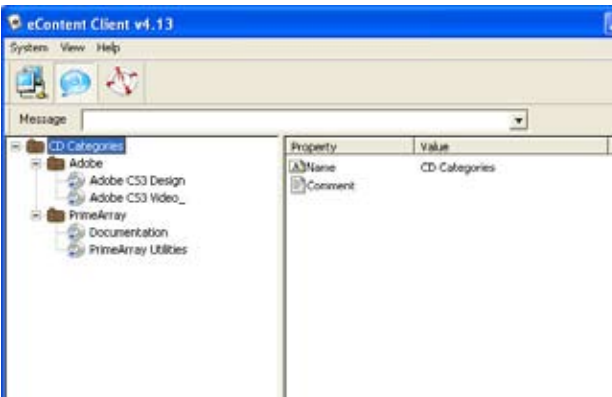
On a user pc, open Windows Explorer and select each shared disc image or folder from the PrimeArray CD/DVD Server. Double click to view the content or run applications.



Content Management System

On a user pc, launch the Content Management client utility and all categorized disc images will be displayed.

Users can browse through the available selections and double click on the disc image they want to access.



The easiest way to run your shared applications!

Maxtet – SCSI attached CD/DVD Tower & Loader

Starting at \$995 or lease for \$25/month

The PrimeArray *Maxtet* is the simplest and least expensive way to share a few CDs or DVDs.

The Maxtet can be configured with up to 12 DVD drives. This is a great solution for:

- Fast, simultaneous disc loading to a server or staging area – up to 260M/s combined data transfer output.
- Accessing most types of copy protected or encrypted discs that cannot be copied to a hard drive.
- Accessing a small number of discs that do not change frequently.



Simply connect the Maxtet to your computer or server via a SCSI adapter and cable. Each optical drive will appear as a drive letter on the workstation to which it is attached. Upgrading a certain disc is as simple as replacing the disc in the drive

Need more technical or pricing information? Call PrimeArray at 1-800-433-5133, email us at sales@primearray.com or visit www.primearray.com

“Set-up couldn’t have been easier,” says Ken Brady, Technical Support Services Technician, “and once its up and running, I leave it alone. I would be surprised if I rebooted it twice a year.” Ken added that “... PrimeArray’s support is excellent, second to none. Nothing was too much to ask.”

**Ken Brady
Cambridge Public Library
Ontario, Canada**

Frequently Asked Questions

What is a CD/DVD Tower or Loader?

We refer to a Tower or Loader as a device, which has up to 12 optical drives, with an optional hard drive. These systems are ideal for quickly loading CDs and DVDs to an internal hard drive, your server or a temporary staging area.

Another benefit of a tower or loader is that it's easy to share encrypted or copy protected discs that cannot be cached to a hard drive. You merely place the disc in the optical drive and provide access to it across your network. *See page 8 for more information on the PrimeArray Maxtet.*

What if some of my CDs and DVDs require that they be run from the machine's local disc drive?

The PrimeArray CD/DVD Server addresses this issue with its remote mapping feature, which allows copied CD and DVD images to appear as if they are in the user's local reader drive. This is far superior to the old method of handing out discs.

What if there are licensing restrictions on sharing the information on my CDs and DVDs?

PrimeArray systems provide administrative tools to control access or limit the number of simultaneous accesses, making it straightforward to comply with the terms of the license.

Can I share copy protected or encrypted CDs and DVDs?

No. These types of discs cannot be copied to a hard drive. If you want to share these types of discs you should purchase a CD/DVD Tower with multiple disc drives. *See the PrimeArray Maxtet on page 8.*

Can I set create multiple shares with different user access rights?

Yes, it is easy to create multiple groupings or sets on a PrimeArray CD and DVD server. The same disc image can exist in multiple shares without any duplication. Use PrimeArray's sophisticated disc management software to organize your discs and set up user permissions.

Frequently Asked Questions

What if my CD or DVD data is subscription based and is updated on a regular basis?

Every time a new subscription arrives you simply insert the disc into the PrimeArray CD/DVD Server's optical drive. Select the image you want to replace and it automatically uploads and replaces the outdated disc while maintaining user access rights.

How scalable is the PrimeArray CD/DVD server?

Hard disk capacity can start as small as 80 GB and be upgraded to 8 TB within a single system. That means you can share up to 4,000 titles or simply archive valuable information - all on one system. You can even purchase a configuration that will let you add more reader and writer optical drives if the need arises.

How easy is it to get the CD/DVD server up and running?

Simply insert your CDs or DVDs into the server's optical drive(s) and an exact disc image is automatically copied onto the server's hard drive. A typical disc takes 5 to 10 minutes to copy. The disc(s) will automatically eject when finished.

Can I categorize my CDs and DVDs into user friendly folders?

You can group CDs and DVDs into various folders with our web based administration software. All content can be organized so that your users will have an intuitive way of viewing the data.

What if I load my entire CD/DVD collection and my hard drive fails?

Your PrimeArray CD/DVD Server offers protection in the rare case of hard drive failure. All your data is "mirrored" to a second hard drive or an array of hard drives to guarantee your CD and DVD images are never lost or corrupted. Once you load your CDs and DVDs you should never have to load them again.

How To Buy

1. Buy Direct from PrimeArray Systems. Call 1-800-433-5133 to speak to one of our knowledgeable technical advisors on configuring a customized solution.
2. Or, buy from a PrimeArray Reseller. PrimeArray will also work with your current reseller. We will discuss your needs directly with you and / or your reseller.

Pricing - Purchase or Lease

PrimeArray's systems are competitively priced and deliver great value. As every system is configured to meet your specific requirements, the price varies depending on the configuration. Please contact us to receive a prompt price quote.

Customer Satisfaction is a Priority

PrimeArray Systems, Inc. will make every effort to ensure complete satisfaction with your purchase. Our knowledgeable sales and technical support staff have many years of experience in recommending solutions to customers' unique needs. We provide extensive pre-sales technical support to assist you in configuring the right solution for your requirements.

Warranty and Technical Support

All PrimeArray CD/DVD Servers are warranted for one year. Free phone and email technical support and firmware downloads are available for the life of your purchased system.

DUNS No. 079554270

Cage Code 1L3U5

About PrimeArray

PrimeArray is a leader in providing customizable, dependable storage products for corporate, government, institutional and educational networks. Large and small organizations across the globe use our CD/DVD servers and loaders for affordable data storage and streamlined information sharing.

PrimeArray is headquartered in Natick, Massachusetts.



Systems, Inc.

12 Michigan Drive Natick, MA 01760

PrimeArray CD/DVD Towers & Loaders

Starting at \$995 or lease for \$25/month

The PrimeArray Maxtet is the simplest way to share copy protected or encrypted CD and DVDs that cannot be copied to a hard drive. It's also a great way to load multiple discs – simultaneously and fast! [See page 8 for more information.](#)



PrimeArray CD/DVD Servers

Starting at \$1,595 or lease for \$40/month

By imaging your CD/DVDs to a CD/DVD Server's hard drive, you can share many more titles, support more users, enable multiple discs to be accessed simultaneously, and provide faster access. [See pages 4 and 5 for more detailed information.](#)



Network Attached Storage

[See page 5 for NAS configurations.](#)